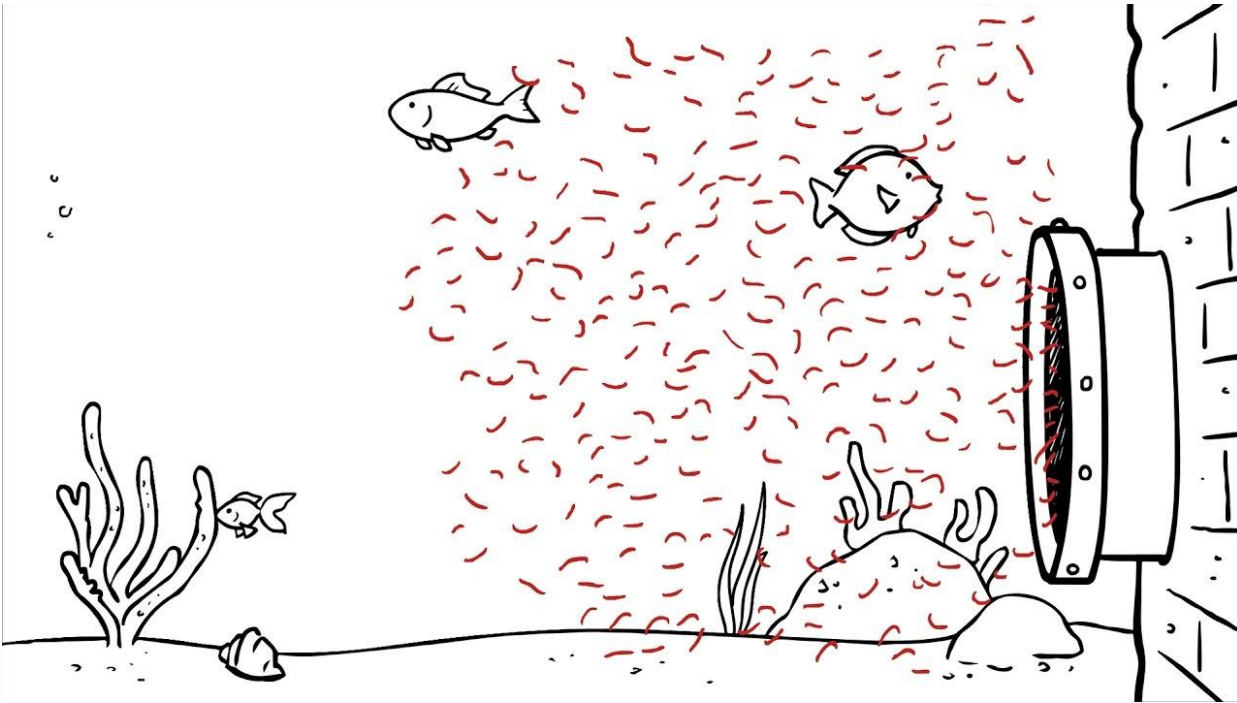


MICROPLASTICS



The pipe in this picture is coming from a water treatment plant. Explain what is happening in the picture and what effect it will have on this aquatic environment

Since the pipe comes from a water treatment plant, the “red stuff” is probably microfibers or microbeads.

The fish are swimming around in it so they are probably eating it and will get eaten by a larger animal, so the microplastic will move up the food chain.

Some of the microplastics may also sink to the bottom or stay floating in the water, so it will continue to exist in the aquatic environment.

What is one thing you can do to help reduce the amount of microplastics going into Long Island Sound?

Suggested answers, but there could be more

- Use less single use plastics - if they get into the water, they will break down and become microplastics.
- Do not use any health/beauty products with microbeads in them.
- Pick up trash on the ground so it will not end up in the water as microplastics.



SoundWaters
Protecting Long Island Sound through Education