

Many different rivers lead to Long Island Sound. Why are rivers important to animals and humans?

Insects are bioindicators, which means they can be used to determine if a river is healthy or polluted because some insects are more sensitive to pollution than others. **Using the insect guide, give THREE examples of insects you would expect to find in each of these rivers and why you picked those.**



River A

- 1) _____
- 2) _____
- 3) _____

WHY?

River B

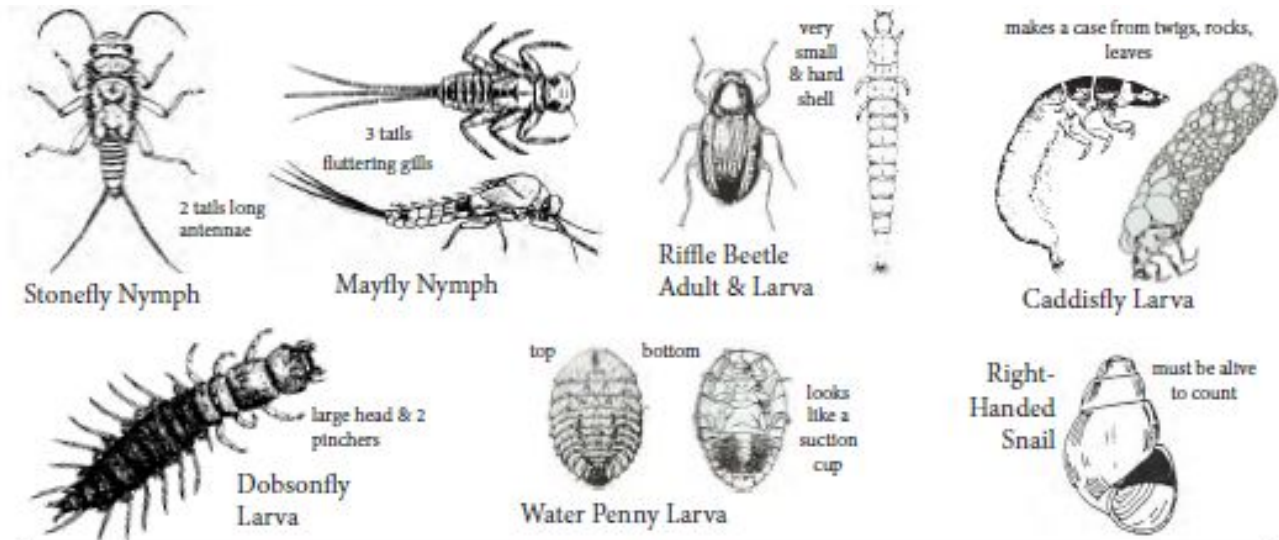
- 1) _____
- 2) _____
- 3) _____

WHY?

FRESHWATER BIOINDICATORS

INSECT GUIDE

GROUP 1: DOES NOT LIKE TO LIVE IN POLLUTED WATER



GROUP 4: IS ABLE TO LIVE IN POLLUTED WATER

